



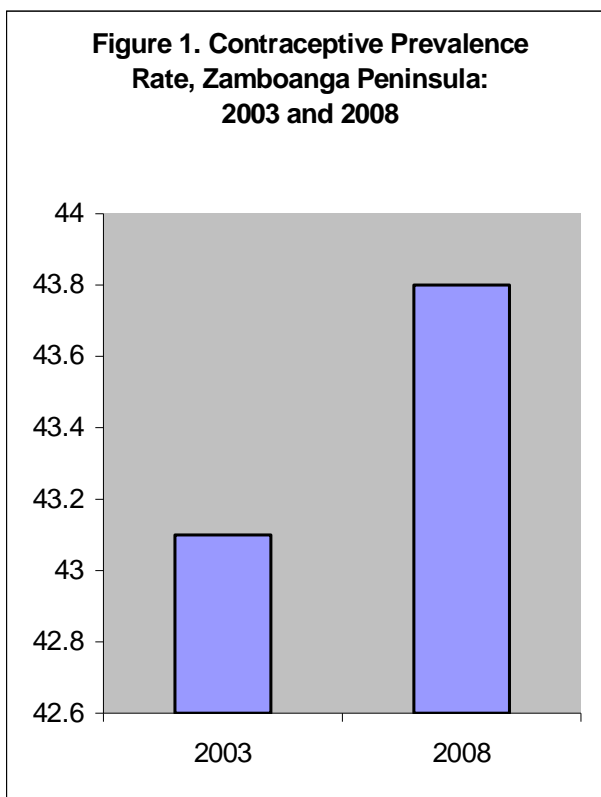
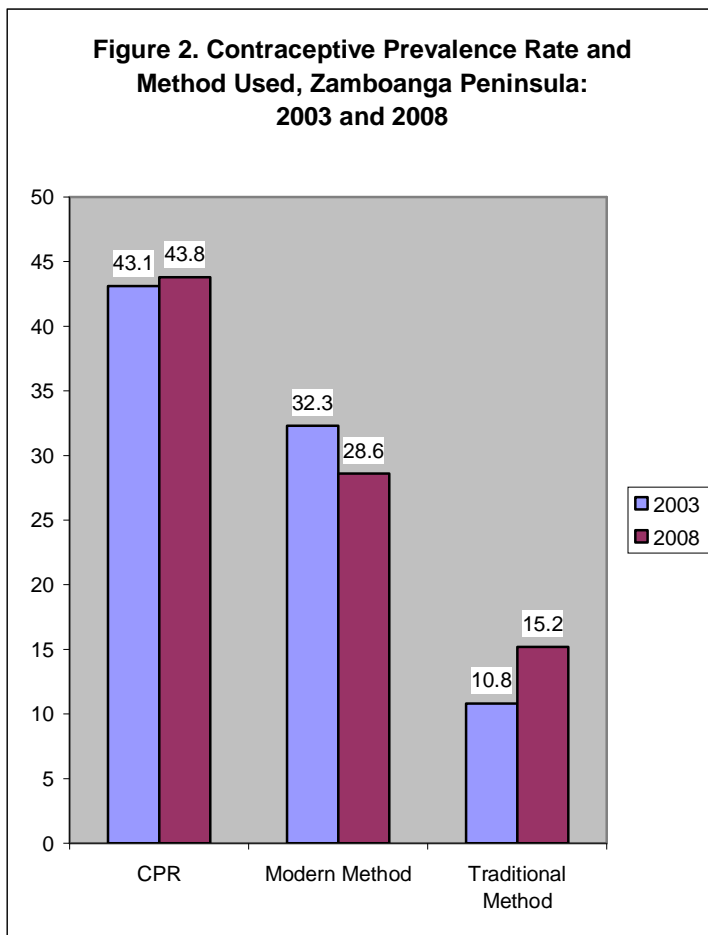
## Did you know that...

### ... contraceptive prevalence rate in Zamboanga Peninsula increased in 2008?

The results of the 2008 National Demographic and Health Survey (NDHS) conducted by the National Statistics Office (NSO) showed that the overall contraceptive prevalence rate among the currently married women aged 15-49 years old in Zamboanga Peninsula was 43.8 percent. This was relatively high compared to the 2003 figure of 43.1 percent.

It can be noted that among the currently married women in the region during the latest survey, 28.6 percent used modern contraceptive methods, 15.2 percent used traditional methods, and 56.2 percent did not use any method at all.

The pill was the most preferred method of birth control with a rate of 18.6 percent, rhythm ranked second at 8.6 percent, withdrawal at 5.4 percent, female sterilization at 4.2 percent, IUD with 3.1 percent, Injectables at 1.4 percent and condom at 1.3 percent.



The contraceptive prevalence rate is one of the most widely used indicator to assess the progress of a national family planning program. The contraceptive prevalence rate is defined as the proportion of married women age 15-49 who used some methods of family planning at the date of survey.

The public and private sector each provide about half of the family planning methods. The public sector is most likely to provide female sterilization, IUDs and injectables, while private sources provide mostly pills and condoms.

source: National Statistics Office