



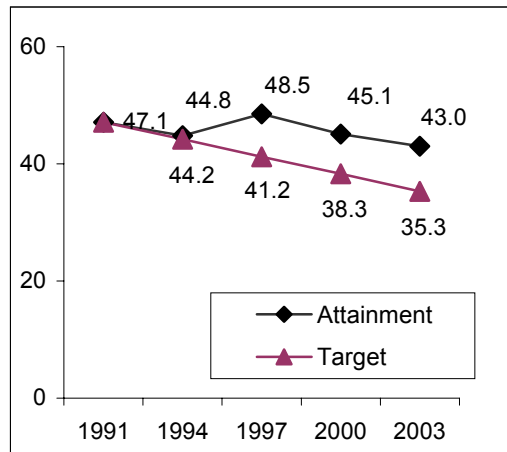
*Did you know that . . .*

## EV lagged behind its poverty reduction target of 35.3% in 2003?

Eradicating extreme poverty and hunger is one of the Millennium Development Goals (MDGs) our government is committed to achieve as member of the United Nations. In Eastern Visayas, we aim to halve poverty incidence from 47.1 percent in 1991 to 23.6 percent in 2015.

In 2003, while poverty incidence dropped to 43.0 percent, the region still wasn't able to meet its target of 35.3 percent, lagging by 7.7 percentage points. If this trend continues, the region may not likely achieve its poverty reduction target by 2015.

Figure 1. POVERTY INCIDENCE OF POPULATION  
REGION VIII: 1991-2003



Source: National Statistical Coordination Board

| Region VIII                       | Performance                |
|-----------------------------------|----------------------------|
| Regional Target                   | 47.1 23.6<br>(1991) (2015) |
| Target Level of Attainment: 2003  | 35.3                       |
| Current Level of Attainment: 2003 | 43.0                       |
| Gap                               | 7.7<br>Lagging             |

**GOAL 1: Eradicate extreme poverty and hunger.**  
**Target :** Halve, between 1990s to 2015, the proportion of people whose income is below the poverty line.

Among provinces, the levels of achievement were generally low except for the provinces of Eastern Samar and Northern Samar which registered high achievement. This could be attributed to the large reduction in their poverty incidence in 2003. Biliran recorded the lowest achievement. Its poverty incidence worsened from 44.9 in 1997 to 55.6 percent in 2003. Similarly, Leyte posted a slight increase in poverty incidence from 39.6 in 1997 to 42.3 in 2003.

Table 1. POVERTY INCIDENCE OF POPULATION BY PROVINCE AND ASSESSMENT OF PROGRESS, REGION VIII: 1997-2003

| Province           | Baseline Data (1997) | Current Level (2003) | Coefficient of Variation (CV) | Target (2015) | Actual Annual Rate of Progress | Target Annual Rate of Progress | Ratio of Annual Rate of Progress | Assessment of Progress |
|--------------------|----------------------|----------------------|-------------------------------|---------------|--------------------------------|--------------------------------|----------------------------------|------------------------|
| <b>Region VIII</b> | <b>47.1</b>          | <b>43.0</b>          | <b>4.3</b>                    | <b>23.6</b>   | <b>0.3</b>                     | <b>1.0</b>                     | <b>0.3</b>                       | <b>Low</b>             |
| Leyte              | 39.6                 | 42.3                 | 6.3                           | 19.8          | -0.4                           | 1.1                            | -0.4                             | Low                    |
| Biliran            | 44.9                 | 55.6                 | 9.3                           | 22.5          | -1.8                           | 1.2                            | -1.4                             | Low                    |
| S. Leyte           | 44.4                 | 41.2                 | 11                            | 22.2          | 0.5                            | 1.2                            | 0.4                              | Low                    |
| Samar              | 47.2                 | 45.9                 | 8.7                           | 23.6          | 0.2                            | 1.3                            | 0.2                              | Low                    |
| E. Samar           | 67.2                 | 41.1                 | 16.8                          | 33.6          | 4.4                            | 1.9                            | 2.3                              | High                   |
| N. Samar           | 55.5                 | 40.8                 | 14.5                          | 27.8          | 2.5                            | 1.5                            | 1.6                              | High                   |

Note: Baseline data for the region is 1991.

Source: National Statistical Coordination Board

### Technical Notes

**Target** – the level to be achieved by 2015.

**Actual Annual Rate of Progress** – the actual rate of progress every year.

**Target Annual Rate of Progress** – the targeted rate of progress to be achieved every year to meet the target by 2015.

**Assessment of Progress** – the ratio of actual rate of progress to the target annual rate of progress. (*High* - rate of progress is greater than 0.9; *Medium* – rate of progress is between 0.5 - 0.9; *Low* – rate of progress is less than 0.5)

**Coefficient of Variation** – a degree of precision in which CVs are acceptable within 10 percent. However, estimates with greater CVs may also be used with caution so as not to suppress the estimates.

**Keep the promise: Attainment of the 2015 Millennium Development Goals**

For your inquiries and other information needs, visit or call the:

NATIONAL STATISTICAL INFORMATION CENTER  
NATIONAL STATISTICAL COORDINATION BOARD  
G/F Calzita Bldg., No. 143 P. Zamora Street, Tacloban City

Tel. No. (053) 321-4507; Telefax No. (053) 325-7508  
URL: www.nscb.gov.ph/ru8  
E-mail Address: nscbru8@yahoo.com