



Did you know that...

...among the regions in Mindanao, Region XI has the highest number of OFWs in Japan?

According to the 2002 Survey of Overseas Filipinos by the NSO, 67% of the 15,000 Mindanao OFWs in Japan were from Region XI, (Figure 1). Majority or 81.1 percent of these OFWs from Region XI who went to Japan as OFWs were females, (Table 1). Among the regions in Mindanao, Davao Region has the highest percentage share of female OFWs going to Japan, (Figure 2).

Figure 1. Percentage Distribution of OFWs in Japan, By Regions in Mindanao, 2002

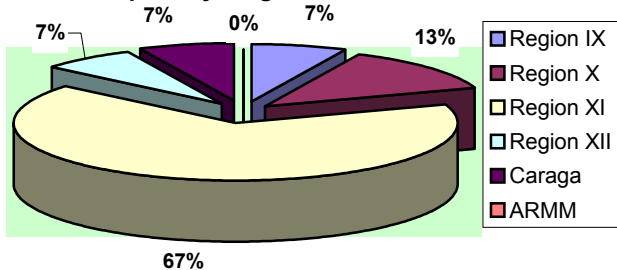


Table 1 Distribution of OFWs Going to Japan, By Sex, By Region Mindanao, 2002

Region	Both Sexes (In Thousands)	Male (%)	Female (%)
Mindanao	15	26.7	73.3
Region IX	1	100.0	-
Region X	2	40.5	59.5
Region XI	10	18.9	81.1
Region XII	1	38.7	61.3
Caraga	1	38.3	61.7
ARMM	-	-	-

Figure 2. Percentage Distribution of Mindanaoan OFWs Going to Japan, By Region, By Sex 2002

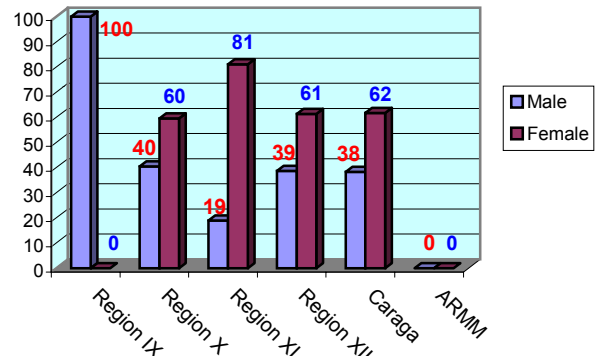


Table 2 Distribution of OFWs by Asian Countries, by Sex, Davao Region, 2002

Continent and Country	Both Sexes (In Thousands)	Male (%)	Female (%)
Total Asia	21	29.3	70.7
East Asia	12	20.8	79.2
Hongkong	1	-	100.0
South Korea	*	-	100.0
Japan	10	18.9	81.1
Taiwan	1	62.5	37.5
Southeast & Central Asia	1	-	100.0
Brunei	*	-	100.0
Singapore	1	-	100.0
Western Asia	8	45.6	54.4
Israel	*	100.0	-
Kuwait	1	-	100.0
Jordan	*	-	100.0
Qatar	*	-	100.0
Saudi Arabia	4	60.0	40.0
UAE	2	52.2	47.8

* Less than 500

In 2002, of the total number of OFWs from Davao Region, slightly more than one-third or 37.0% went to Japan, (Table 2). Japan was the highest employer of OFWs from Davao Region, second highest was Saudi Arabia, (Table 2).

Asia absorbed majority of the OFWs from Davao Region, (Table 3). Of the total OFWs, 77.8% worked in Asia. Only 3.7% worked in North and South America.



Table 3
Distribution of OFWs by Place of Work, by Sex
Davao Region, 2002

Continent	Both Sexes (In Thousands)	Male (%)	Female (%)
All Countries	27	40.6	59.5
Asia	21	29.3	70.7
Europe	5	100.0	-
North & South America	1	-	100.0
Other Countries	-	-	-

Most of these OFWs, or 40.7% were aged 25-29. Of this age group, 61.1% were females, (Table 4).

Table 4
Distribution of OFWs by Age Group, by Sex
Davao Region, 2002

Age Group	Both Sexes (In Thousands)	Male (%)	Female (%)
All ages	27	40.6	59.5
15-19	-	-	-
20-24	4	-	100.0
25-29	11	38.9	61.1
30-34	2	43.0	57.0
35-39	4	38.8	61.2
40-44	4	46.6	53.4
45 and over	2	100.0	0.0

Female OFWs from Davao Region consistently outnumbered male OFWs in all the continents and in all the countries of destination, (Tables 2 and 3). Most of the OFWs in all the other regions in Mindanao were also females, (Figure 3). Among the Regions in Mindanao, Region 9 has the largest number of OFWs, followed by Regions 11 and 12, (Table 5).

Figure 3. Percentage Distribution of Mindanaoan OFWs, by Region, by Sex, 2002

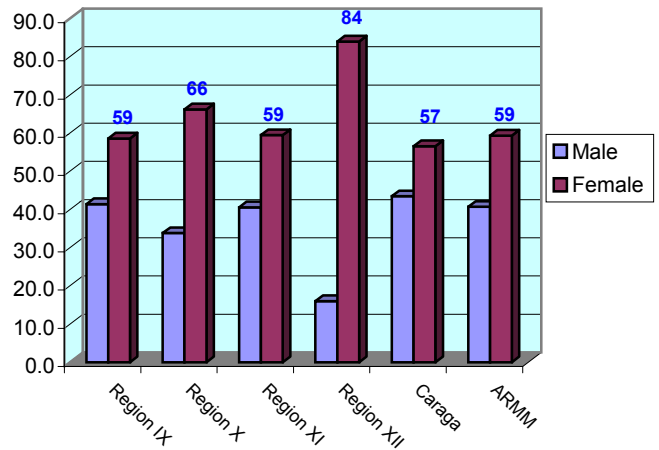


Table 5
Distribution of OFWs by Sex and Region, 2002

Island Group and Region	Both Sexes (In Thousands)	Male (%)	Female (%)
Mindanao	135	34.8	65.2
Region IX	28	41.4	58.6
Region X	26	33.8	66.2
Region XI	27	40.6	59.5
Region XII	28	16.0	84.0
Caraga	11	43.5	56.5
ARMM	15	40.7	59.3



Now Available!
at only (PhP1,605.00)

2005 Philippine Statistical Yearbook

This publication presents in time series, statistics about the country's macro and micro environment. These statistics are compiled from results of surveys and censuses conducted by the Philippine Statistical System, from the records of administrative and regulatory agencies of the government, as well as from the data gathered by the local and international organizations. The Philippine Statistical Yearbook (PSY) contains data which are disaggregated in different dimensions as useful tools in the conduct of strategic planning, policy, program and project formulation, business and investment decision making, research and feasibility studies. The PSY includes a glossary of terms that provides the definition of selected statistical terminologies not widely understood by the general public.

For your **data** needs, pls. visit or call us at the:

NATIONAL STATISTICAL COORDINATION BOARD
Regional Unit XI
2/F Amparo Bldg., J.P. Laurel Ave., Bajada, Davao City

Tel/Fax No. : (082) 224 2379; Tel. No. (082) 227 6213
e-mail address: nscbru11@mozcom.com
URL: <http://www.nscb.gov.ph/ru11/>