



2009 Official Poverty Statistics

Presented by
ESTRELLA R. TURINGAN
Regional Head



National Statistical Coordination Board XI
30 March 2011
Marco Polo Hotel, Davao City

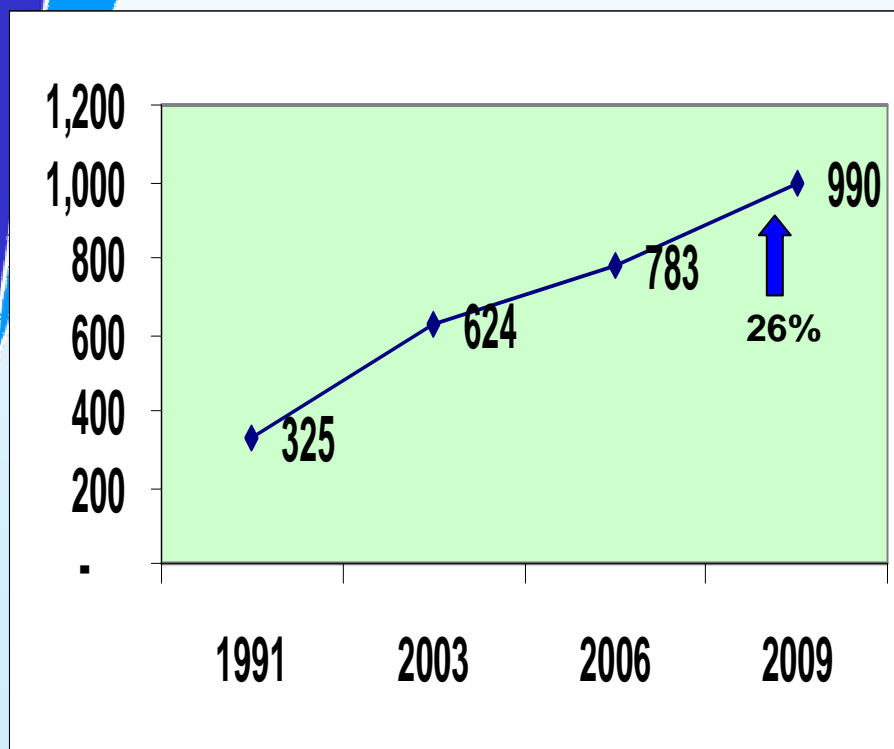


I. The 2009 Official Poverty Statistics in Region 11

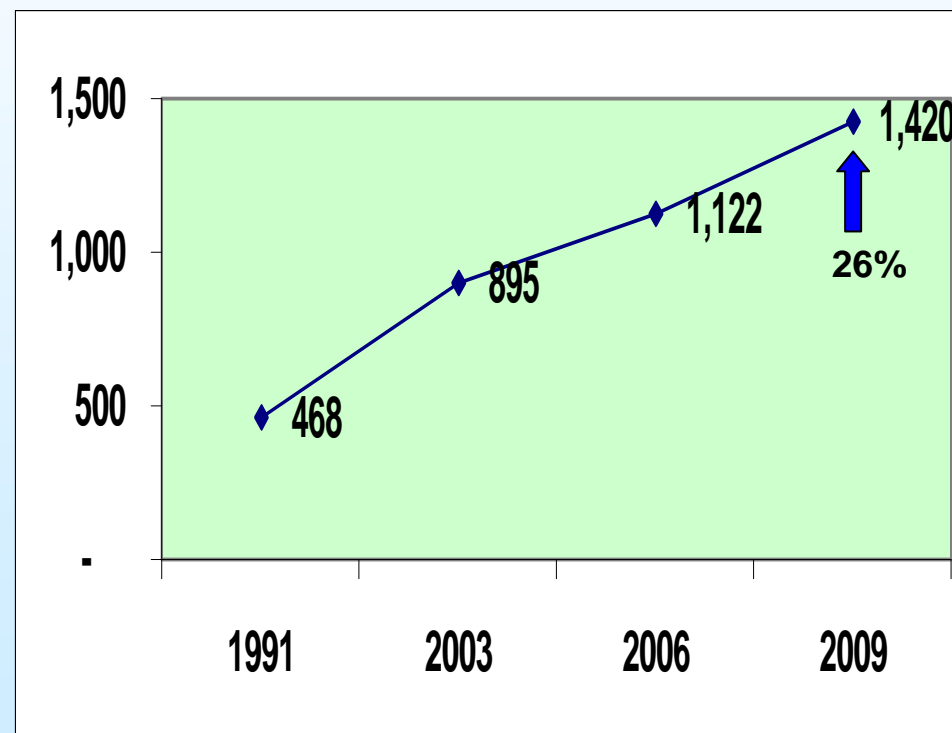


Region XI: A Davaoeno needed PhP 990 in 2009 to meet his/her monthly food needs and PhP 1,420 to stay out of poverty!

Monthly Per Capita Food Threshold (in PhP)



Monthly Per Capita Poverty Threshold (in PhP)

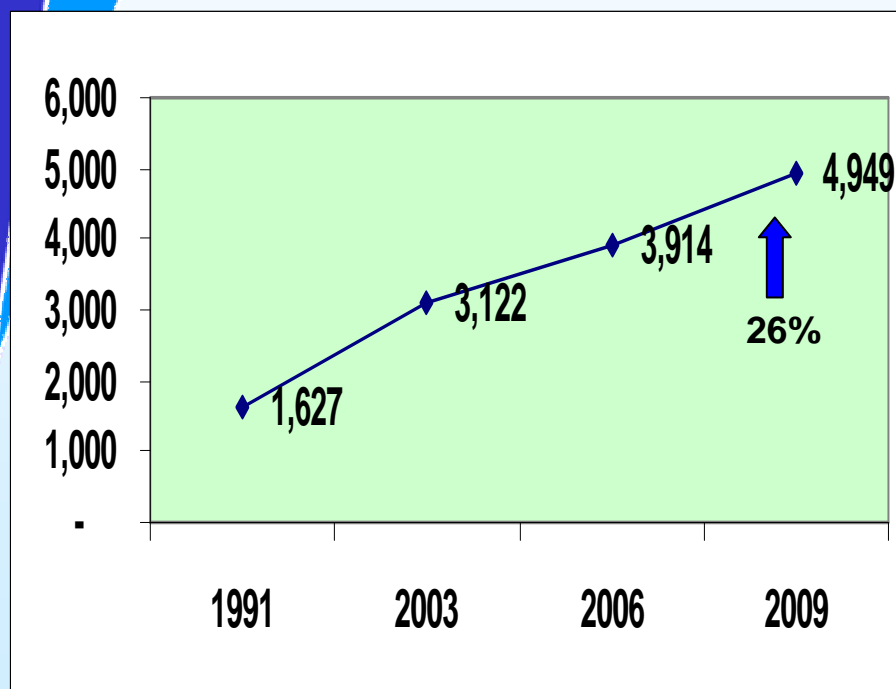


I. The 2009 Official Poverty Statistics in Region 11

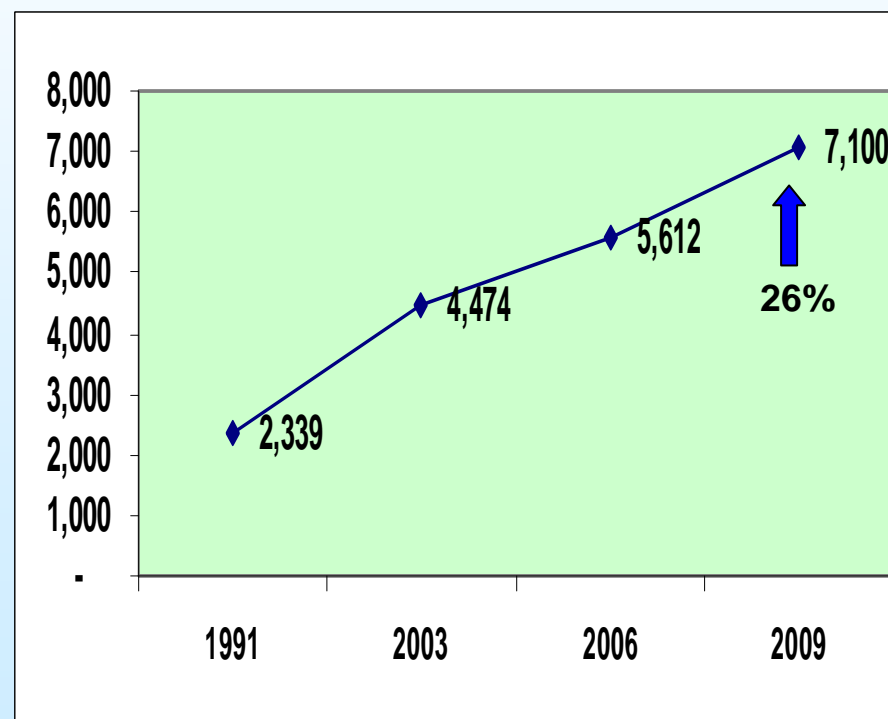


Region XI: In 2009, family of five needed PhP 4,949 monthly income to meet food needs and PhP 7,100 to stay out of poverty!

Monthly Food Threshold for a Family of Five (in PhP)











Monthly Poverty Threshold for a Family of Five (in PhP)



I. The 2009 Official Poverty Statistics in Region 11



Region XI: In 2009, family of five needed PhP 233 daily income to stay out of poverty!

Family size	Required income (in PhP)		
	Daily	Monthly	Annual
1 	47	1,420	17,040
2 	93	2,840	34,079
3 	140	4,260	51,119
4 	187	5,680	68,158
5 	233	7,100	85,198
6 	280	8,520	102,237
7 	327	9,940	119,277
8 	373	11,360	136,317



I. The 2009 Official Poverty Statistics in Region 11

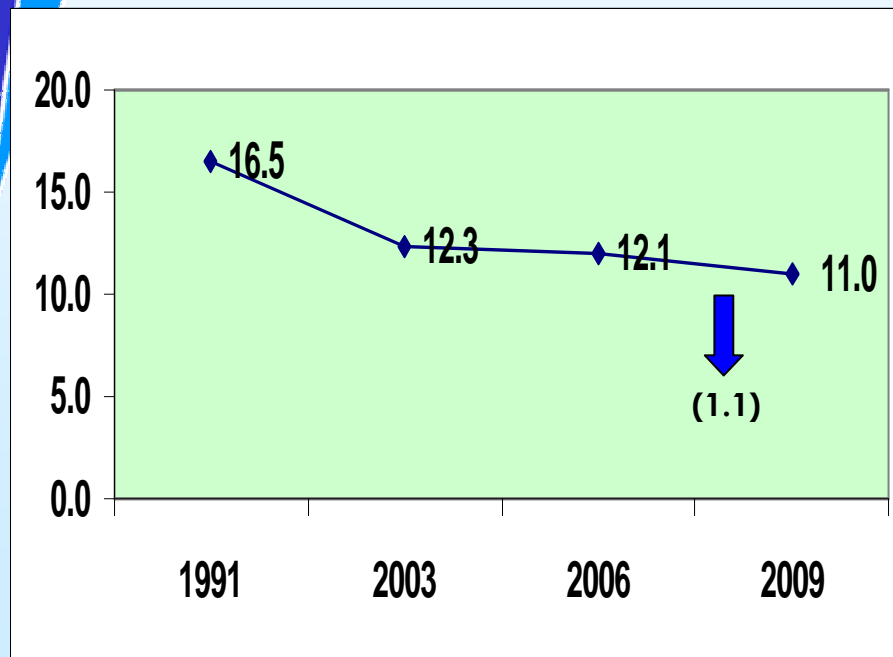


REGION XI (among FAMILIES):

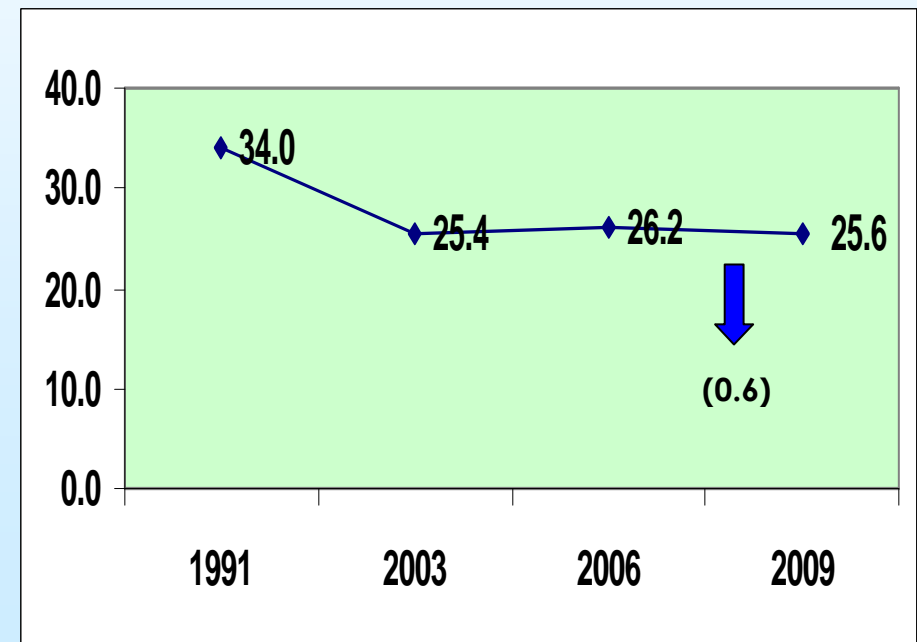
Subsistence incidence among families improved – from **12.1%** in 2006 to **11.0%** in 2009.

Out of 100 families --- **12 families** were classified as food poor in 2006, this was reduced to **11** out of 100 families in 2009.

Subsistence Incidence Among Families (%)



Poverty Incidence Among Families (%)

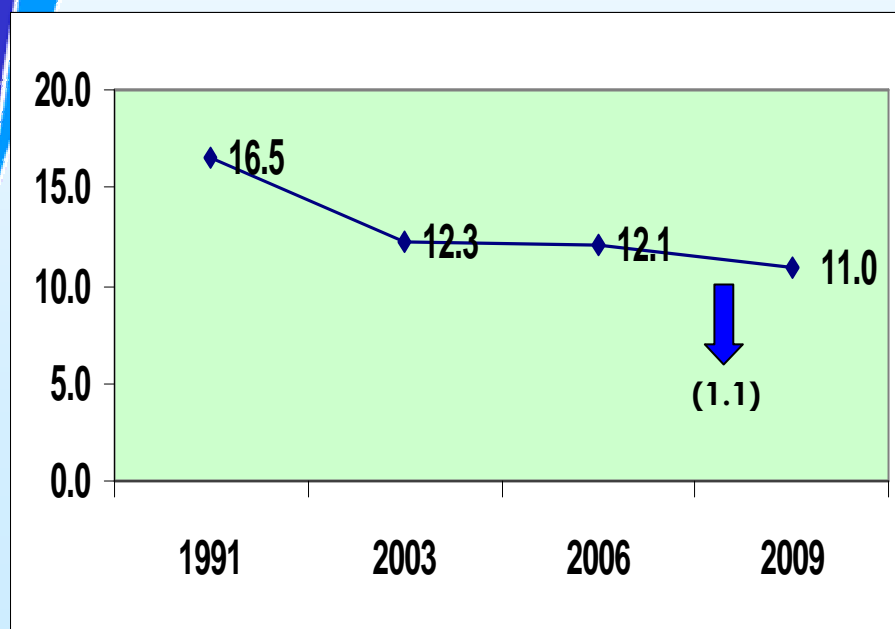




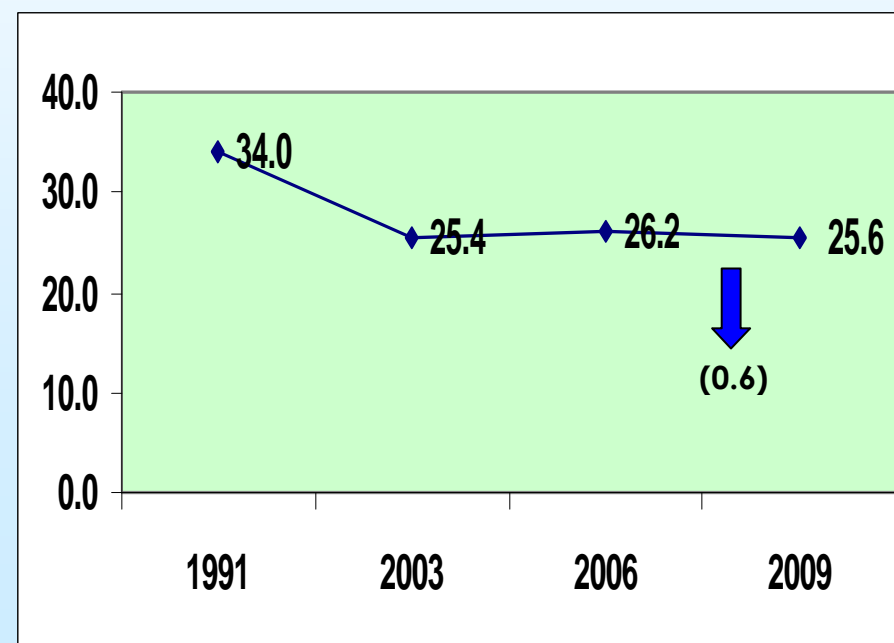
REGION XI (among FAMILIES):

In terms of poverty incidence among families, there was only a slight reduction during the three-year period – from **26.2%** in 2006 to **25.6%** in 2009.

Subsistence Incidence
Among Families (%)



Poverty Incidence
Among Families (%)



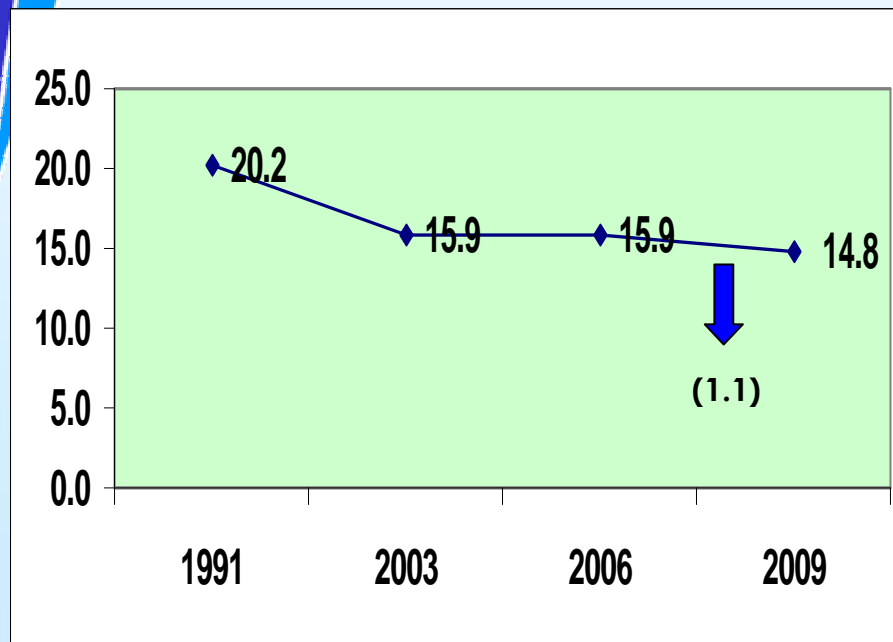
I. The 2009 Official Poverty Statistics in Region 11



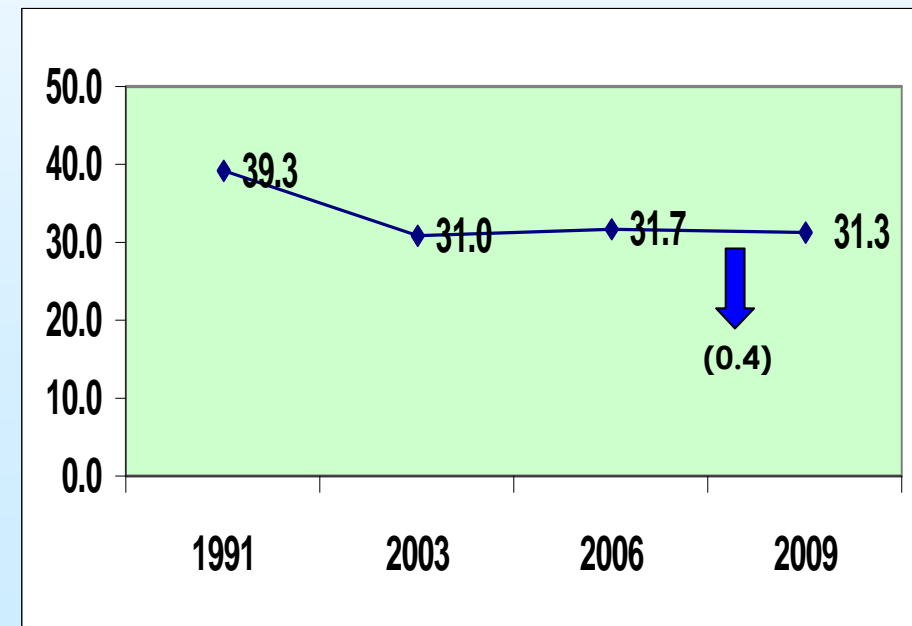
REGION XI (among POPULATION):

- Subsistence incidence among population improved – from **15.9%** in 2006 to **14.8%** in 2009!
- Out of 100 Filipinos -- **16** Filipinos were classified as food poor in 2006, this was reduced to **15** in 2009!

Subsistence Incidence
among Population (in %)



Poverty Incidence
among Population (in %)

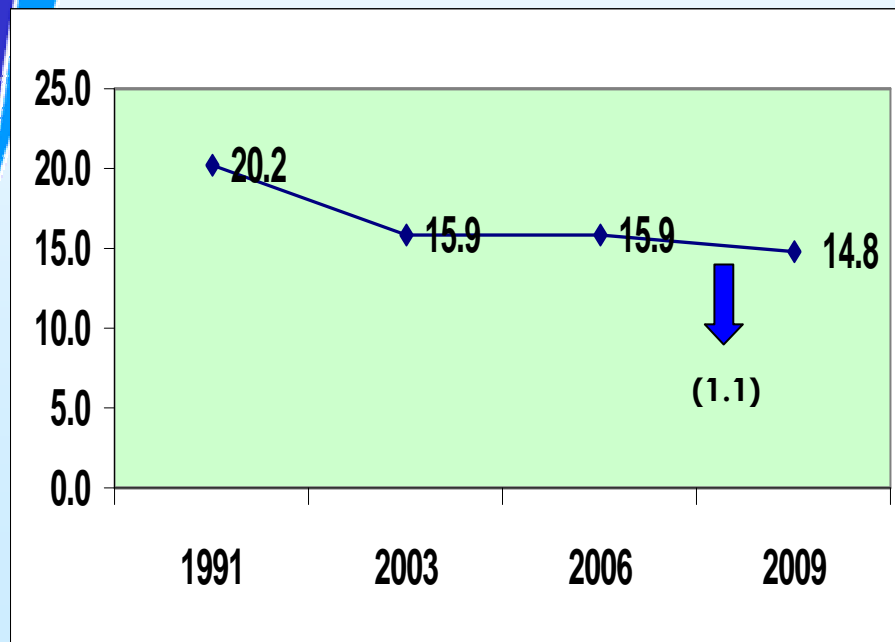




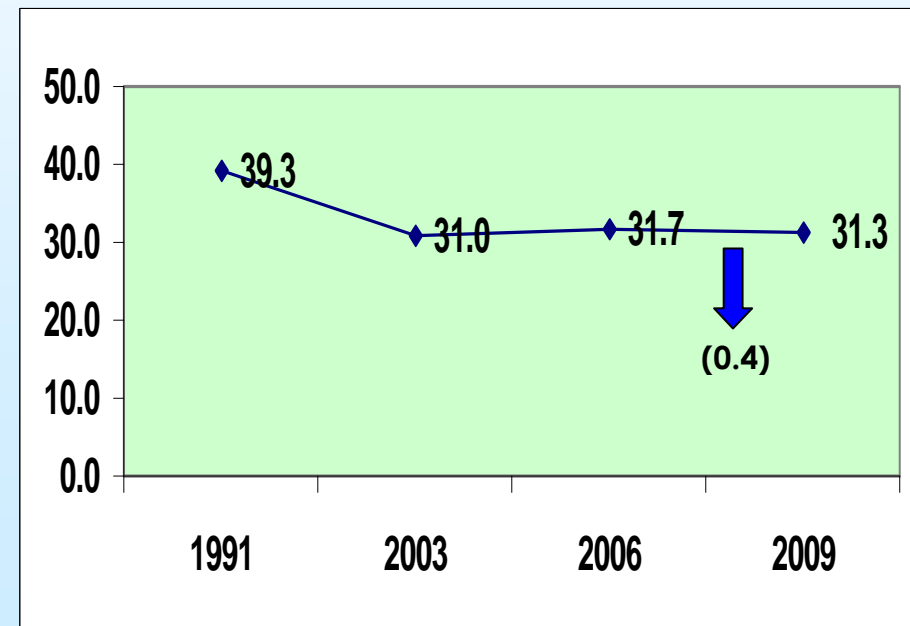
REGION XI (among POPULATION):

In terms of poverty incidence among population, there was a very slight decrease during the three-year period – from **31.7%** in 2006 to **31.3%** in 2009.

Subsistence Incidence among Population (in %)



Poverty Incidence among Population (in %)



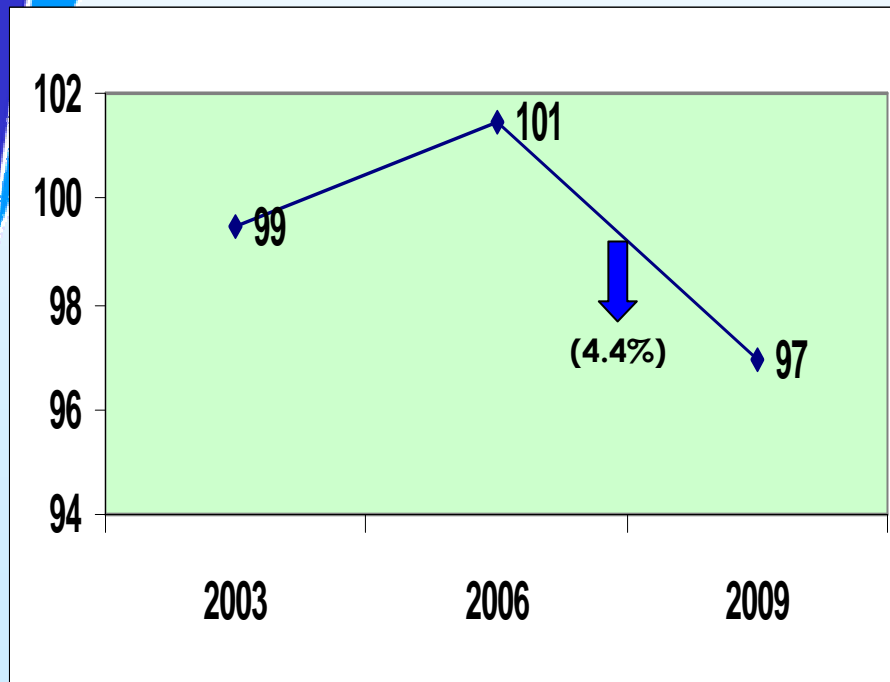
I. The 2009 Official Poverty Statistics in Region 11



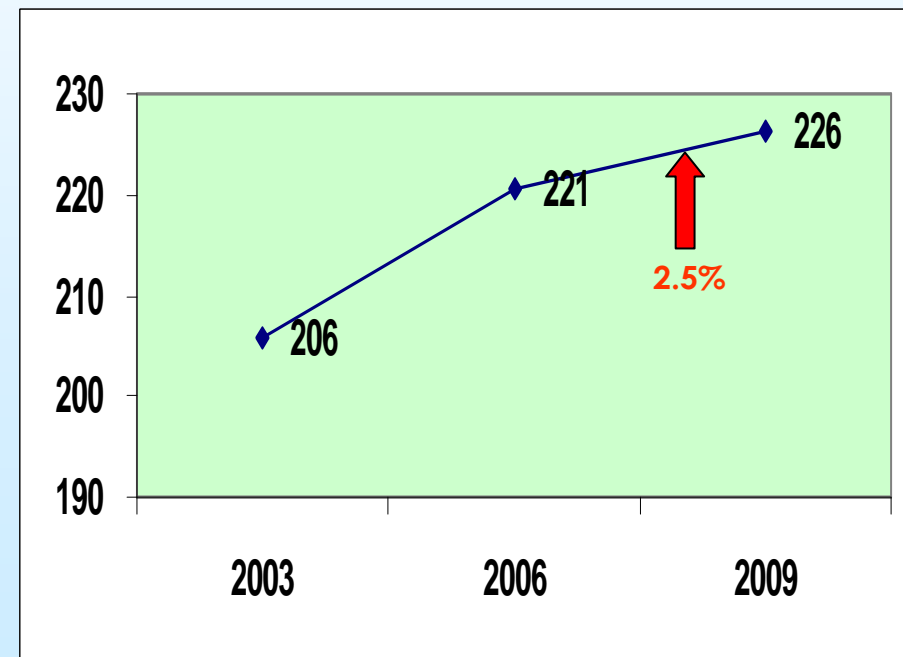
REGION XI:

- Magnitude of subsistence poor families decreased by about 4,515 from 101,484 in 2006 to 96,969 in 2009!
- However, in terms of magnitude of poor families, there was an increase of about 5,577 from 220,707 in 2006 to 226,284 in 2009!

Magnitude of Subsistence Poor Families (in '000)



Magnitude of Poor Families (in '000)

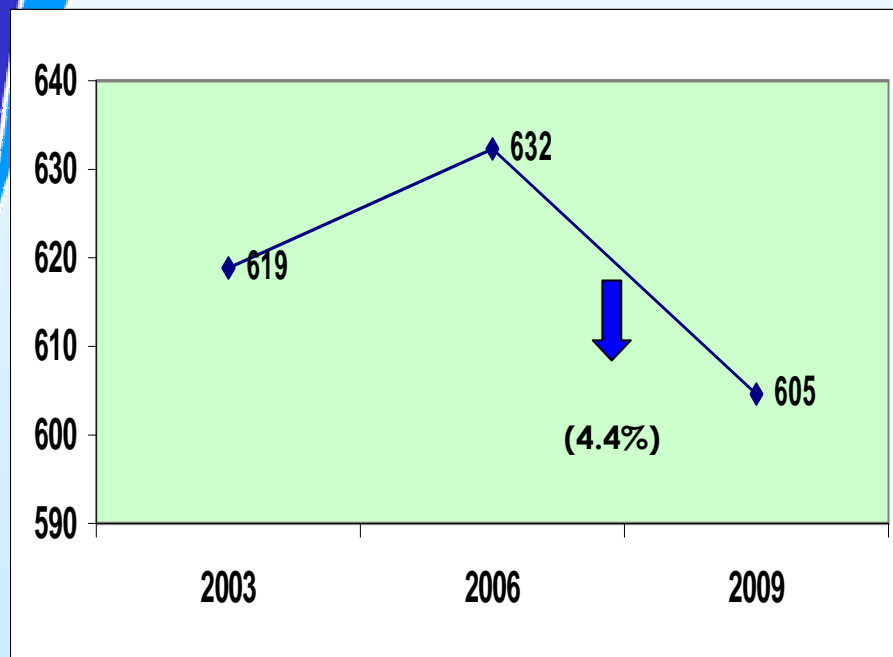




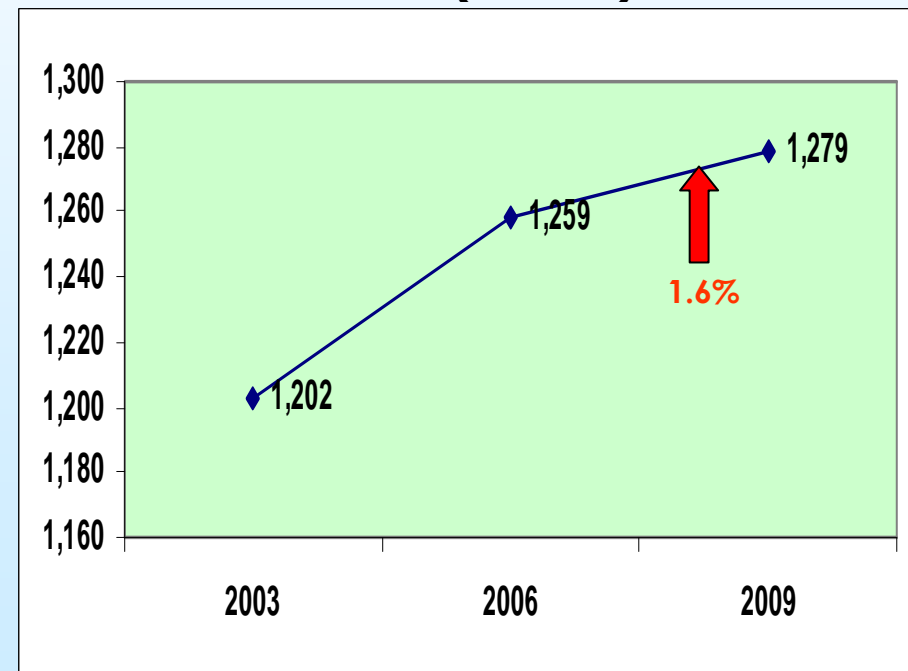
REGION XI (MAGNITUDE among POPULATION):

- Magnitude of subsistence poor population decreased by about **27,742** in 2009 – from 632,354 in 2006 to 604,612 in 2009!
- The magnitude of poor population increased by almost **20,356** Davaoenos from 1.26 million in 2006 to 1.28 in 2009 by 1.6%.

Magnitude of Subsistence Poor Population (in '000)



Magnitude of Poor Population (in '000)



I. The 2009 Official Poverty Statistics in Region 11



REGION XI:

- While poverty deteriorated between 2003 and 2006, these improved between 2006 and 2009 – except for the increases in the magnitude of poor families and magnitude of poor population.
- The increases, however, were not as much as between 2003 and 2006!

Indicator	2003 to 2006	2006 to 2009
AMONG FAMILIES		
Subsistence Incidence, Families	-0.2 ↓	- 1.1 ↓
Poverty Incidence, Families	+ 0.9 ↑	- 0.6 ↓
Magnitude of Food Poor Families	+ 2,047 ↑	- 4,515 ↓
Magnitude of Poor Families	+ 14,741 ↑	+ 5,577 ↑
AMONG POPULATION		
Subsistence Incidence, Population	0.0	- 1.1 ↓
Poverty Incidence, Population	+ 0.8 ↑	-0.4 ↓
Magnitude of Food Poor Population	+13,460 ↑	- 27,742 ↓
Magnitude of Poor Population	+56,151 ↑	+ 20,356 ↑





NATIONAL: Income shortfall of the poor decreased between 2006 and 2009!

FGT measure	2003	2006	2009	Inc/Dec	
				03-06	06-09
Income gap	30.3	28.4	27.5	(1.9) ↓	(0.9) ↓
Total Cost (in pesos)	3.9 B	4.8 B	6.0 B	23.1 ↑	24.5 ↑
Per Capita Cost (in pesos)	3,253	3,825	4,686	17.6 ↑	22.5 ↑

In 2009, the average income of a **poor Davaoeno** needed to be increased by 27.5% of the poverty threshold or Php 4,686; This means that the government needed a total of Php 6.0 billion in 2009 to eliminate poverty in Davao Region.



I. The 2009 Official Poverty Statistics in Region 11



Average per capita income of the bottom 30% rose faster than prices of food!

Indicator	2006	2009	% Change
Subsistence Incidence (among families)	12.1	11.0	(9.0)
Inflation (food)	135.1	169.8	25.7
Inflation (all items)	137.5	164.4	19.6
Annual Per Capita Food Threshold	9,392	11,879	26.5
Mean/average per capita income (APCI)			
All income groups	28,037	35,835	27.8
First decile class	7,094	8,977	26.6
Second decile class	10,199	13,361	31.0
Third decile class	13,144	16,969	29.1
Fourth decile class	16,051	20,530	27.9
Fifth decile class	19,510	24,773	27.0
Sixth decile class	23,731	30,074	26.7
Seventh decile class	29,369	34,479	24.2
Eight decile class	37,522	46,917	25.0
Ninth decile class	52,730	66,657	26.4
Tenth decile class	103,021	147,814	43.3



I. The 2009 Official Poverty Statistics in Region 11



Average per capita income of the bottom 30% of families rose faster than prices of all items!




Indicator	2006	2009	% Change
Poverty Incidence (among families)	26.2	25.6	(2.4)
Inflation (food)	135.1	169.8	25.7
Inflation (all items)	137.5	164.4	19.6
Annual Per Capita Food Threshold	13,469	17,040	19.6
Mean/average per capita income (APCI)			
All income groups	28,037	35,835	27.8
First decile class	7,094	8,977	26.6
Second decile class	10,199	13,361	31.0
Third decile class	13,144	16,969	29.1
Fourth decile class	16,051	20,530	27.9
Fifth decile class	19,510	24,773	27.0
Sixth decile class	23,731	30,074	26.7
Seventh decile class	29,369	34,479	24.2
Eight decile class	37,522	46,917	25.0
Ninth decile class	52,730	66,657	26.4
Tenth decile class	103,021	147,814	43.3





National:

With the latest 2009 poverty estimates, the probability of halving poverty, between 1990 and 2015, has gone down but remains at medium!

Indicator	Target	1991	2003	2006	2009
Poverty incidence among population	19.7	39.3 (Baseline)	 31.0	 31.7	 31.3
Pace of Progress			0.85	0.62	0.54

Notes: The pace of progress is computed as the ratio of the actual annual growth rate and required annual growth rate.



High: Pace of Progress is greater than 0.9



Medium: Pace of Progress between 0.5 and 0.9



Low: Pace of Progress is less than 0.5

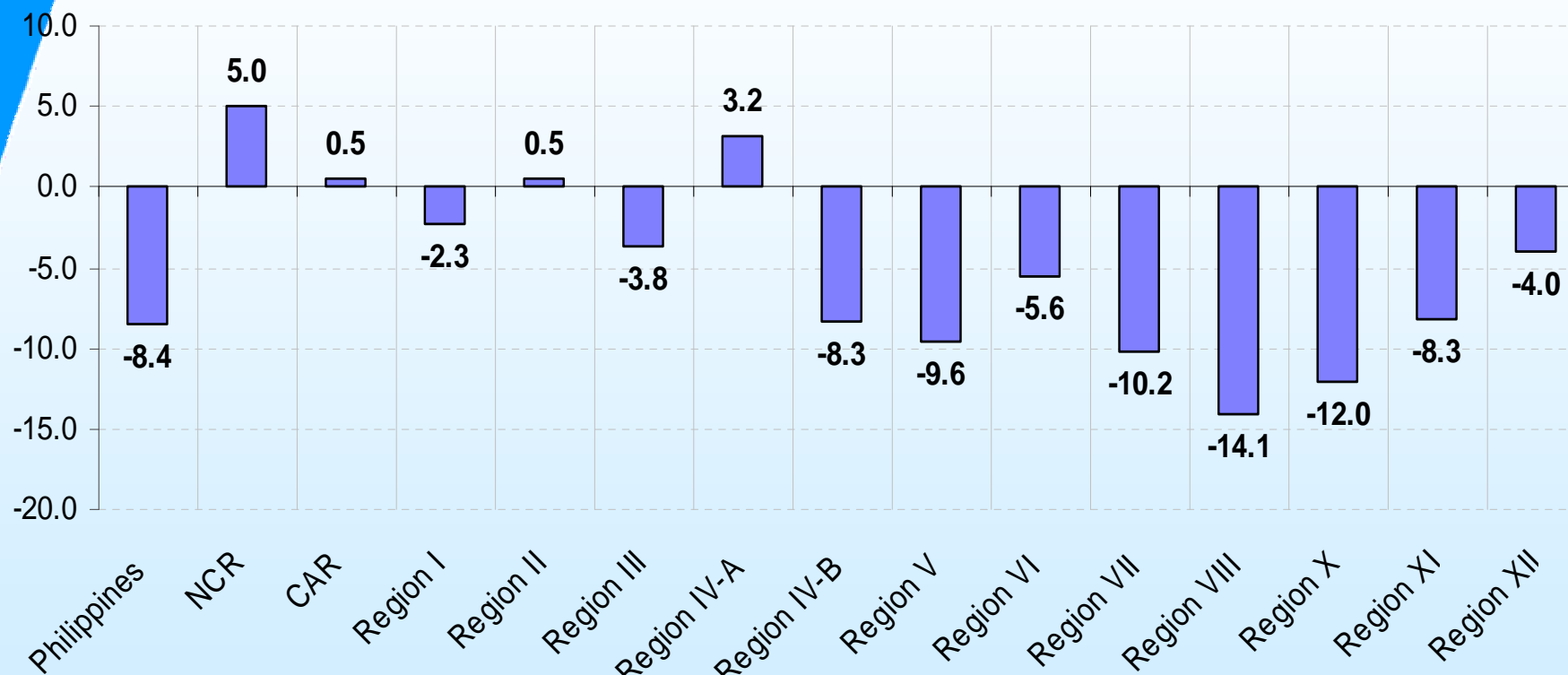


I. The 2009 Official Poverty Statistics in Region 11



As of 2009, the Philippines was eight years behind target on poverty reduction!

Only NCR, CAR, Regions II and IV-A are ahead of their targets!



Notes: Time-distance (years): positive (+) – time lead (progress is ahead the path to target)

Negative (-) – time lag (Progress is behind the path to target)

The time distance is a new generic statistical measure for analysis and visualization of time series data. This was first developed by Prof. Pavle Sicherl of the University of Ljubljana, Slovenia.

Region IX, Caraga, and ARMM are 27, 21, and 81 years behind the target in 2009.



II. The 2009 Official Poverty Statistics in Among Provinces in Region XI



REGION XI: Among the province in Davao Region, Davao del Sur continues to have the lowest poverty incidence among families!

Province	2003			2006			2009		
	Poverty Incidence	90% CI		Poverty Incidence	90% CI		Poverty Incidence	90% CI	
		Lower Limit	Upper Limit		Lower Limit	Upper Limit		Lower Limit	Upper Limit
Davao Oriental	35.6	26.7	44.4	39.0	28.0	50.1	42.5	36.4	48.6
Compostela Valley	33.1	23.4	42.7	30.3	22.9	37.6	31.1	25.4	36.8
Davao Norte	26.6	17.8	35.3	31.6	23.6	39.6	29.6	20.0	39.3
Davao del Sur	20.5	16.3	24.7	20.2	15.0	25.4	19.2	14.4	24.0



II. The 2009 Official Poverty Statistics in Among Provinces in Region XI



REGION XI: Among the provinces in Davao Region, Davao del Sur continues to have the lowest poverty incidence among population!

Province	Poverty Incidence Among Population (%)		
	2003	2006	2009
Region XI	31.0	31.7	31.3
Davao Oriental	45.9	46.9	52.7
Compostela Valley	40.7	36.8	36.7
Davao del Norte	32.7	38.2	33.9
Davao del Sur	24.2	24.3	24.6



III. The 2009 Official Poverty Statistics: Philippines



REGIONAL: Caraga and ARMM consistently posted the highest poverty incidence among families in 2006 and 2009!

Region	Poverty incidence among families		
	2003	2006	2009
PHILIPPINES	20.0	21.1	20.9
Caraga	37.6	36.9	39.8
ARMM	25.0	36.5	38.1
Region IX	40.5	34.2	36.6
Region V	38.0	36.1	36.0
Region VIII	30.2	31.1	33.2
Region X	32.4	32.7	32.8
Region VII	32.1	33.5	30.2
Region XII	27.2	27.1	28.1
Region IV-B	29.8	34.3	27.6
Region XI	25.4	26.2	25.6
Region VI	23.5	22.1	23.8
Region I	17.8	20.4	17.8
CAR	16.1	18.6	17.1
Region II	15.2	15.5	14.5
Region III	9.4	12.0	12.0
Region IV-A	9.2	9.4	10.3
NCR	2.1	3.4	2.6



III. The 2009 Official Poverty Statistics: Philippines



REGIONAL: Regions VII, V, and VI continue to have the biggest share in the total number of poor families!

Region	Magnitude of Poor Families			% Share to Total Poor Families		
	2003	2006	2009	2003	2006	2009
PHILIPPINES	3,293,096	3,670,791	3,855,730	100.0	100.0	100
Region VII	389,818	432,870	415,303	11.8	11.8	10.8
Region V	358,981	364,318	385,338	10.9	9.9	10.0
Region VI	298,058	302,836	345,703	9.1	8.2	9.0
Region VIII	227,458	253,347	287,156	6.9	6.9	7.4
Region X	239,874	257,640	275,433	7.3	7.0	7.1
Region IV-A	201,725	210,830	248,179	6.1	5.7	6.4
Region III	169,771	228,741	244,273	5.2	6.2	6.3
Region IX	237,898	224,378	242,285	7.2	6.1	6.3
Region XI	205,966	220,707	226,284	6.3	6.0	5.9
Region XII	192,545	203,000	224,882	5.8	5.5	5.8
ARMM	126,233	194,626	218,043	3.8	5.3	5.7
Caraga	156,221	163,783	187,278	4.7	4.5	4.9
Region I	156,261	193,392	179,179	4.7	5.3	4.6
Region IV-B	148,924	186,838	162,609	4.5	5.1	4.2
Region II	89,352	96,311	94,433	2.7	2.6	2.4
NCR	48,923	80,828	64,404	1.5	2.2	1.7
CAR	45,088	56,346	54,949	1.4	1.5	1.4

III. The 2009 Official Poverty Statistics: Philippines



REGIONAL: 8 of 17 regions had decreasing poverty incidence between 2006 and 2009, only 5 regions between 2003 and 2006!

Region	Poverty incidence among families			Increase/Decrease	
	2003	2006	2009	03-06	06-09
PHILIPPINES	20.0	21.1	20.9		
Region IV-B	29.8	34.3	27.6	4.5 ↑	(6.7) ↓
Region VII	32.1	33.5	30.2	1.4 ↑	(3.2) ↓
Region I	17.8	20.4	17.8	2.6 ↑	(2.6) ↓
CAR	16.1	18.6	17.1	2.4 ↑	(1.5) ↓
Region II	15.2	15.5	14.5	0.3 ↑	(1.1) ↓
NCR	2.1	3.4	2.6	1.3 ↑	(0.8) ↓
Region XI	25.4	26.2	25.6	0.9 ↑	(0.6) ↓
Region V	38.0	36.1	36.0	(1.9) ↓	(0.1) ↓
Region III	9.4	12.0	12.0	2.6 ↑	0.1 ↑
Region X	32.4	32.7	32.8	0.2 ↑	0.2 ↑
Region IV-A	9.2	9.4	10.3	0.1 ↑	0.9 ↑
Region XII	27.2	27.1	28.1	(0.1) ↓	1.0 ↑
ARMM	25.0	36.5	38.1	11.4 ↑	1.7 ↑
Region VI	23.5	22.1	23.8	(1.4) ↓	1.7 ↑
Region VIII	30.2	31.1	33.2	1.0 ↑	2.1 ↑
Region IX	40.5	34.2	36.6	(6.3) ↓	2.4 ↑
Caraga	37.6	36.9	39.8	(0.7) ↓	3.0 ↑

III. The 2009 Official Poverty Statistics: Philippines



REGIONAL: Increase in the average per capita income was faster than the increase in prices of food in only 6 of the 17 regions!

REGION	Subsistence Incidence (Families)			NOMINAL AVERAGE Per Capita Income (APCI)			CPI for Food			%APCI - %CPI
	2006	2009	% Change	2006	2009	% Change	2006	2009	% Change	
			06-09			06-09			06-09	
(1)	(2)	(3)	(4)	(5)	(6)	(7)	(8)	(9)	(10)	(11)
PHILS	8.7	7.9	(0.8)	35,788	43,538	21.7	130.7	162.4	24.3	(2.6)
NCR	0.7	0.4	(0.3)	66,106	77,462	17.2	127.8	153.5	20.1	(2.9)
CAR	8.3	7.6	(0.7)	39,989	46,694	16.8	128.4	158.4	23.4	(6.6)
Region I	7.1	5.5	(1.6)	29,966	40,239	34.3	135.3	167.4	23.7	10.6
Region II	4.3	4.1	(0.2)	30,846	40,791	32.2	132.0	165.3	25.2	7.0
Region III	3.7	3.7	0.1	40,595	46,944	15.6	129.7	159.7	23.1	(7.5)
Region IV-A	2.8	2.4	(0.3)	45,276	53,029	17.1	125.5	154.9	23.4	(6.3)
Region IV-B	2.8	10.5	7.8	21,631	29,727	37.4	131.6	163.1	23.9	13.5
Region V	15.7	12.9	(2.9)	24,766	30,264	22.2	129.7	162.8	25.5	(3.3)
Region VI	7.9	7.9	0.0	27,635	34,147	23.6	127.6	164.2	28.7	(5.1)
Region VII	17.1	13.2	(3.8)	29,189	37,850	29.7	143.9	176.4	22.6	7.1
Region VIII	13.5	14.4	0.9	25,042	33,157	32.4	132.0	176.2	33.5	(1.1)
Region IX	17.9	18.6	0.6	25,515	30,181	18.3	132.3	169.8	28.3	(10.0)
Region X	16.3	15.6	(0.6)	28,460	34,500	21.2	135.1	172.3	27.5	(6.3)
Region XI	12.1	11.0	(1.1)	28,037	35,835	27.8	136.5	173.3	27.0	0.8
Region XII	10.8	11.3	0.5	24,281	32,975	35.8	132.2	166.3	25.8	10.0
Caraga	16.9	19.7	2.8	22,821	29,526	29.4	136.0	177.5	30.5	(1.1)
ARMM	11.6	8.5	(3.1)	16,809	21,273	26.6	143.9	190.6	32.5	(5.9)



III. The 2009 Official Poverty Statistics: Philippines

Batanes, the 4 districts of NCR, Benguet, Cavite, Bulacan, Laguna, Rizal, and Pampanga were consistently included in the least poor cluster of provinces in 2003, 2006, and 2009!

•New entrants in the least poor cluster of provinces in 2009 were Ilocos Norte, Bataan, and Nueva Vizcaya!

Province	2003			2006			2009		
	Poverty incidence	90% CI		Poverty incidence	90% CI		Poverty incidence	90% CI	
		Lower limit	Upper limit		Lower limit	Upper limit		Lower limit	Upper limit
Batanes	6.3	6.3	6.3	0	0	0	0	0	0
4th District	1.8	1.1	2.4	2.9	2	3.7	1.6	0.7	2.5
2nd District	2.6	1.7	3.4	3.8	2.1	5.5	2.4	1.6	3.2
Benguet	4.4	1.7	7.1	3.6	2.1	5	4	2	6.1
1st District	1.1	0.4	1.7	3.1	1.7	4.5	3.8	2	5.6
3rd District	2.6	1.7	3.5	3.7	2.6	4.8	3.8	2.5	5.1
Nueva Vizcaya	3.2	1.8	4.6	5.8	1.4	10.3	6.7	2.9	10.5
Cavite	4.8	3.4	6.2	4.2	2.6	5.7	4.5	3.1	5.9
Bulacan	4.3	2.9	5.7	5.1	3.7	6.6	4.8	3.7	5.9
Laguna	5.2	3.5	6.9	4.5	3	6	5.9	4.1	7.6
Rizal	2.9	1.9	3.9	2.7	1.6	3.7	6.5	4.2	8.7
Bataan	8.1	5.1	11	7.2	4	10.5	7.4	4.8	10
Pampanga	4.9	3.5	6.3	3.8	2.4	5.2	6.7	4.9	8.4
Ilocos Norte	14.3	7.9	20.6	11.3	5.8	16.9	9.2	6.1	12.3



Zamboanga del Norte, Agusan del Sur, Surigao del Norte, Maguindanao, Bohol, and Masbate were consistently included in the bottom cluster of provinces in 2003, 2006, and 2009!

Province	2003			2006			2009		
	Poverty incidence	90% CI		Poverty incidence	90% CI		Poverty incidence	90% CI	
		Lower limit	Upper limit		Lower limit	Upper limit		Lower limit	Upper limit
Zamboanga del Norte	59.5	51.4	67.5	54.1	46.4	61.7	52.9	46	59.8
Agusan del Sur	48.5	41.3	55.6	45.5	38.2	52.9	51.2	43.5	58.9
Surigao Del Norte	42.3	35.2	49.4	41.6	34.9	48.3	47.9	43.1	52.8
Eastern Samar	29.8	20.5	39	37.6	31.8	43.5	45.8	37.6	54.1
Maguindanao	41.9	34.4	49.5	44.9	39	50.9	44.6	37.7	51.6
Zamboanga Sibugay	43.3	33.3	53.2	34.1	25.7	42.5	43.2	35.4	50.9
Romblon	35.8	27.9	43.7	40.6	34.7	46.6	43	36.3	49.8
Masbate	50.2	42.3	58	42.9	33.9	51.8	42.5	36.6	48.3
Davao Oriental	35.6	26.7	44.4	39.0	28	50.1	42.5	36.4	48.6
Northern Samar	37.4	27.9	47	43.3	32.9	53.8	41.7	32.4	51
Bohol	40.2	33.8	46.7	43.7	35.8	51.6	41	33.6	48.4
Saranggani	36.7	28.4	45.1	34.0	29.2	38.8	40.7	34	47.3
Sulu	20.3	13.4	27.1	36.7	29.1	44.2	39.3	33	45.5
Lanao del Norte	35.6	27	44.1	34.3	28.1	40.6	39	31.9	46.1
Camarines Sur	38.3	32.5	44.1	36.6	31	42.3	38.7	33.8	43.6
Tawi-tawi	18.2	8.1	28.2	49.1	39.8	58.4	31.5	22.2	40.8
Negros Oriental	43.6	35.6	51.5	44.4	36.1	52.7	36.4	29.5	43.2
Occidental Mindoro	32.6	24.9	40.3	40.6	30.4	50.7	25.4	18.3	32.4
Sultan Kudarat	37.3	28.1	46.5	38.7	30.9	46.5	35.2	28.8	41.7
Misamis Occidental	37	30.6	43.4	38.2	30.7	45.7	36.9	29.7	44.1
Camiguin	35.1	31.5	38.7	37.8	21.9	53.7	36.4	25.9	46.8
Apayao	10.7	3.4	18	37.0	24.6	49.4	36.3	23.2	49.4
Siquijor	45.5	27.4	63.5	25.8	13.9	37.6	32.8	21.3	44.3
Camarines Norte	40.7	28.6	52.9	30.4	21.6	39.2	32.3	25.3	39.2



III. The 2009 Official Poverty Statistics: Philippines



PROVINCIAL: Cebu and Negros Occidental continue to have the biggest share in the total number of poor families!

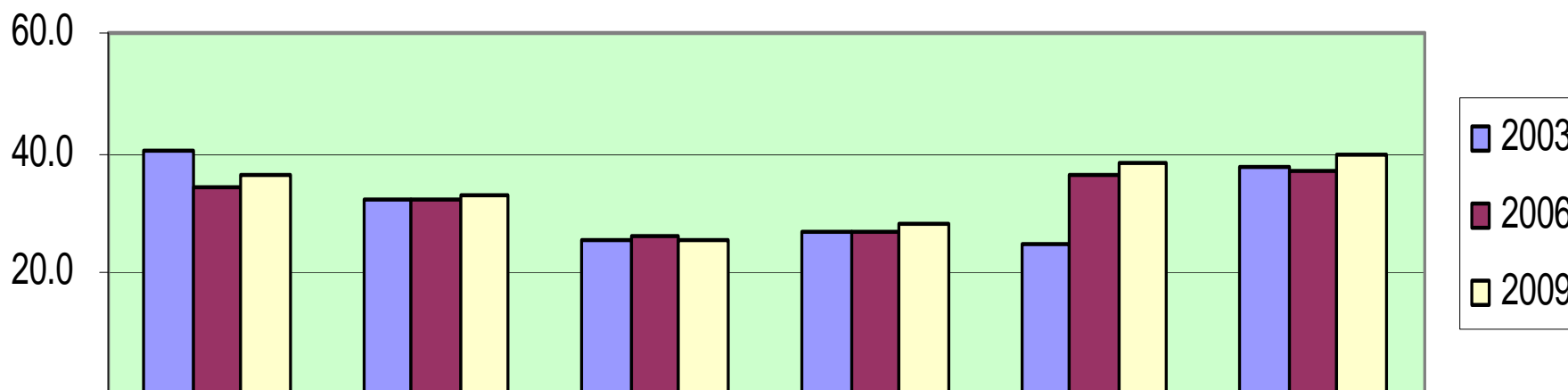
Province	Magnitude of Poor Families			% Share to Total Poor Families		
	2003	2006	2009	2003	2006	2009
PHILIPPINES	3,293,096	3,670,791	3,855,730	100	100	100
Cebu	185,624	211,406	213,162	5.6	5.8	5.5
Negros Occidental	112,512	130,077	144,828	3.4	3.5	3.8
Camarines Sur	116,460	119,747	126,280	3.5	3.3	3.3
Pangasinan	92,191	128,396	114,400	2.8	3.5	3.0
Nueva Ecija	64,808	94,026	112,367	2.0	2.6	2.9
Leyte	99,082	104,260	110,214	3.0	2.8	2.9
Zamboanga del Norte	102,074	101,511	109,745	3.1	2.8	2.8
Bohol	90,735	104,032	102,522	2.8	2.8	2.7
Quezon	84,031	101,394	98,426	2.6	2.8	2.6
Davao del Sur	88,165	89,452	94,049	2.7	2.4	2.4
Negros Oriental	105,334	112,585	91,387	3.2	3.1	2.4



III. The 2009 Official Poverty Statistics: Mindanao



MINDANAO: Among the regions in Mindanao, Davao Region remained with the lowest poverty incidence among families in 2009! Only Davao Region poverty incidence improved among the Mindanaoan regions.



	Region IX	Region X	Region XI	Region XII	ARMM	Caraga
2003	40.5	32.4	25.4	27.2	25.0	37.6
2006	34.2	32.7	26.2	27.1	36.5	36.9
2009	36.6	32.8	25.6	28.1	38.1	39.8



III. The 2009 Official Poverty Statistics: Mindanao



MINDANAO: Regions X and Region IX continue to have the biggest share in the total number of poor families in Mindanao!

Region	Magnitude of Poor Families			% Share to Total Poor Families		
	2003	2006	2009	2003	2006	2009
PHILIPPINES	3,293,096	3,670,791	3,855,730	100.0	100.0	100
Region X	239,874	257,640	275,433	7.3	7.0	7.1
Region IX	237,898	224,378	242,285	7.2	6.1	6.3
Region XI	205,966	220,707	226,284	6.3	6.0	5.9
Region XII	192,545	203,000	224,882	5.8	5.5	5.8
ARMM	126,233	194,626	218,043	3.8	5.3	5.7
Caraga	156,221	163,783	187,278	4.7	4.5	4.9



III. The 2009 Official Poverty Statistics: Mindanao



MINDANAO: Davao Oriental is consistently included in the bottom cluster of provinces in Mindanao in 2003, 2006, and 2009!

Province	Poverty Incidence	90% Confidence Interval		Poverty Incidence	90% Confidence Interval		Poverty Incidence	90% Confidence Interval	
		Lower Limit	Upper Limit		Lower Limit	Upper Limit		Lower Limit	Upper Limit
Zamboanga del Norte	59.5	51.4	67.5	54.1	46.4	61.7	52.9	46.0	59.8
Agusan del Sur	48.5	41.3	55.6	45.5	38.2	52.9	51.2	43.5	58.9
Surigao Del Norte	42.3	35.2	49.4	41.6	34.9	48.3	47.9	43.1	52.8
Maguindanao	41.9	34.4	49.5	44.9	39.0	50.9	44.6	37.7	51.6
Zamboanga Sibugay	43.3	33.3	53.2	34.1	25.7	42.5	43.2	35.4	50.9
Davao Oriental	35.6	26.7	44.4	39.0	28.0	50.1	42.5	36.4	48.6
Saranggani	36.7	28.4	45.1	34.0	29.2	38.8	40.7	34.0	47.3
Sulu	20.3	13.4	27.1	36.7	29.1	44.2	39.3	33.0	45.5
Lanao del Norte	35.6	27.0	44.1	34.3	28.1	40.6	39.0	31.9	46.1



III. The 2009 Official Poverty Statistics: Mindanao



MINDANAO: Davao del Sur is consistently included in the least poor cluster of provinces in Mindanao in 2003, 2006, and 2009!

Province	Poverty Incidence	90% Confidence Interval		Poverty Incidence	90% Confidence Interval		Poverty Incidence	90% Confidence Interval	
		Lower Limit	Upper Limit		Lower Limit	Upper Limit		Lower Limit	Upper Limit
Agusan del Norte	23.8	18.0	29.6	26.4	18.4	34.3	27.3	21.7	32.8
Misamis Oriental	27.1	22.1	32.2	30.2	25.5	35.0	26.3	20.9	31.6
Zamboanga del Sur	29.7	24.0	35.3	23.4	16.8	30.0	26.2	21.1	31.2
North Cotabato	22.2	16.7	27.8	23.3	17.6	29.0	25.6	19.6	31.7
Cotabato City ^{b/}	25.3	11.1	39.6	20.6	6.2	35.1	23.7	16.5	30.9
South Cotabato	22.8	17.0	28.6	22.8	18.1	27.5	23.6	18.6	28.5
Davao del Sur	20.5	16.3	24.7	20.2	15.0	25.4	19.2	14.4	24.0





Maraming Salamat po!

URL: <http://www.nscb.gov.ph/ru11>
e-mail: nscbxi@yahoo.com

