

# NSCB *Fact Sheet*

NATIONAL STATISTICAL COORDINATION BOARD

June 03, 2005

FS-200506-R01-02

## Enrollment in government secondary schools in Region I

### What would improve enrollment in government secondary schools? Building new schools may not be the answer for Region I.

From School Year (SY) 2000-01 to SY 2004-05, there were 18 additional schools that opened in the Ilocos Region. However, enrollment in the same period, albeit on the upward trend, continued to slow down from SY 2000-01 to SY 2003-04 and even decreased in SY 2004-05.

Interestingly, the highest growth in enrollment at 7.7 percent was in SY 2001-02, the same period when the number of schools decreased by 3. The following school year (SY 2002-03), when 16 additional schools opened, growth in the enrollment slowed down to 7.5 percent. In SY 2004-05, enrollment decreased by 0.8 percent despite the opening of 3 new schools.

Enrollment in secondary schools in Region I grew at an average of 4.1 percent from SY 2001-02 to SY 2004-05. On the average, there were only around 10,612 additional students per school year.

In SY 2004-05, among the provinces, it was only the province of La Union that showed an increased enrollment at 2.5 percent although there were no additional schools in the province. Pangasinan, accounting for 63.6 percent of the region's total enrollment, registered the lowest percentage decrease in enrollment at 0.8 percent but this is equivalent to 1,506 lesser students than the preceding school year, the highest among the provinces.

Meanwhile, the past three years saw no additional schools for the province of Ilocos Norte which could be one of the reasons in the steady decline in the province's enrollment from SY 2002-03 to SY 2004-05. The province also had the highest school to student ratio of 1:899, despite having the lowest enrollment in SY 2004-05. Ilocos Sur, on the other hand, with an additional school in SY 2004-05, had the lowest school to student ratio at 1:579, lower than the region's 1:746 school to student ratio. The province's enrollment for the same period however decreased by 3.5 percent or 1,230 lesser than the previous school year.

The low turn-out of enrollment in government secondary schools took place despite the continuing free high school education program of the government and amidst the rising tuition fees in the private schools which could have resulted in a higher enrollment in government schools. The exodus of students could be due to any or combination of the following; 1) unaffordable miscellaneous school expenses; 2) high prices of school supplies and school uniforms; 3) high transportation cost from the student's residence to the school; 4) low priority given to education by parents or the students themselves; and 5) participation in family business or gainful employment.

**Table 1. Enrollment in Gov't. Secondary Schools by Province  
Region I, SY 2000-2001 to SY 2004-2005**

Province	SY 00-01	SY 01-02	SY 02-03	SY 03-04	SY 04-05
Region I	260,362	280,523	301,594	305,338	302,810
Ilocos Norte	25,396	27,929	32,506	32,345	31,470
Ilocos Sur	31,127	32,913	34,874	35,379	34,149
La Union	37,817	40,323	42,465	43,372	44,455
Pangasinan	166,022	179,358	191,749	194,242	192,736

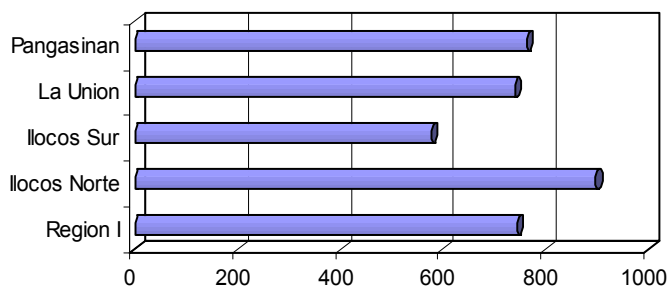
Source of Basic Data: Department of Education

**Table 2. Number of Gov't. Secondary Schools by Province  
Region I, SY 2000-2001 to SY 2004-2005**

Province	SY 00-01	SY 01-02	SY 02-03	SY 03-04	SY 04-05
Region I	388	385	401	403	406
Ilocos Norte	32	32	35	35	35
Ilocos Sur	55	53	58	58	59
La Union	59	59	59	60	60
Pangasinan	242	241	249	250	252

Source of Basic Data: Department of Education

**Figure 1. School-Student Ratio by Province  
Region I, SY 2004-2005**



Source of Basic Data: Department of Education

Also, the quality of education in government secondary schools could be one of the main reasons that drives away parents and students from enrolling in them. If the government would be serious enough in carrying out its slogan of "education for all", it should evaluate the kind of education that students are getting from government schools. At the same time, while the government is continuously reaching out to the remotest areas by establishing more schools in rural areas, the location of these schools vis-à-vis the target enrollees must be thoroughly studied. While the region enjoys the luxury of having many schools, their distribution across areas may be unbalanced and/or their accessibility maybe a problem to students.